

# The Keadby 3 Low Carbon Gas Power Station Project

**Document Ref: 4.9**

**Planning Inspectorate Ref: EN010114**

**The Keadby 3 (Carbon Capture Equipped Gas Fired Generating Station) Order**

**Land at and in the vicinity of the Keadby Power Station site, Trentside, Keadby, North Lincolnshire**

## Indicative Cooling Water and Waste Water Connection Plans

**The Planning Act 2008**

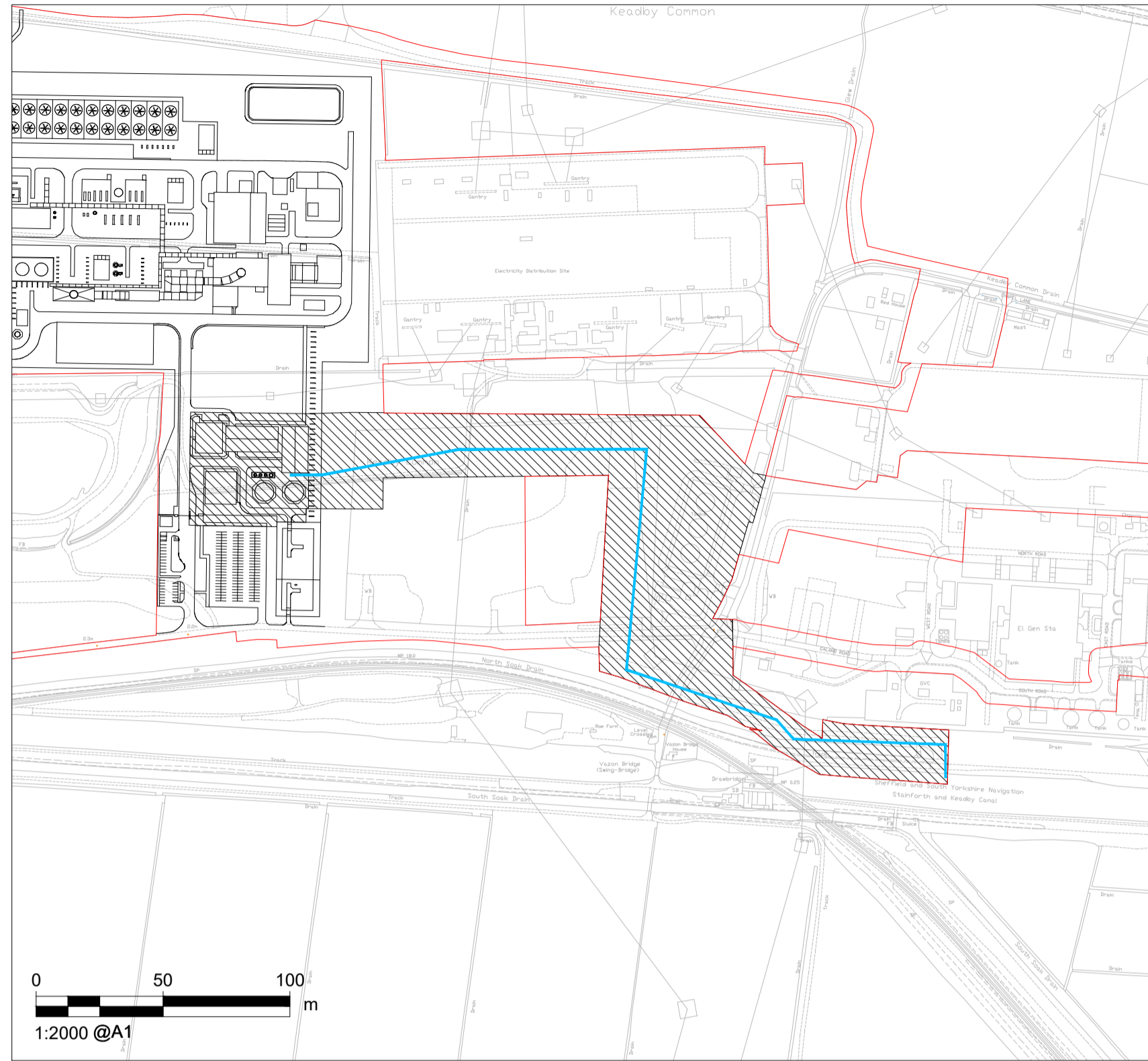
**The Infrastructure Planning (Applications: Prescribed Forms and Procedure) Regulations 2009 - Regulation 5(2)(o)**

**Applicant: Keadby Generation Limited**

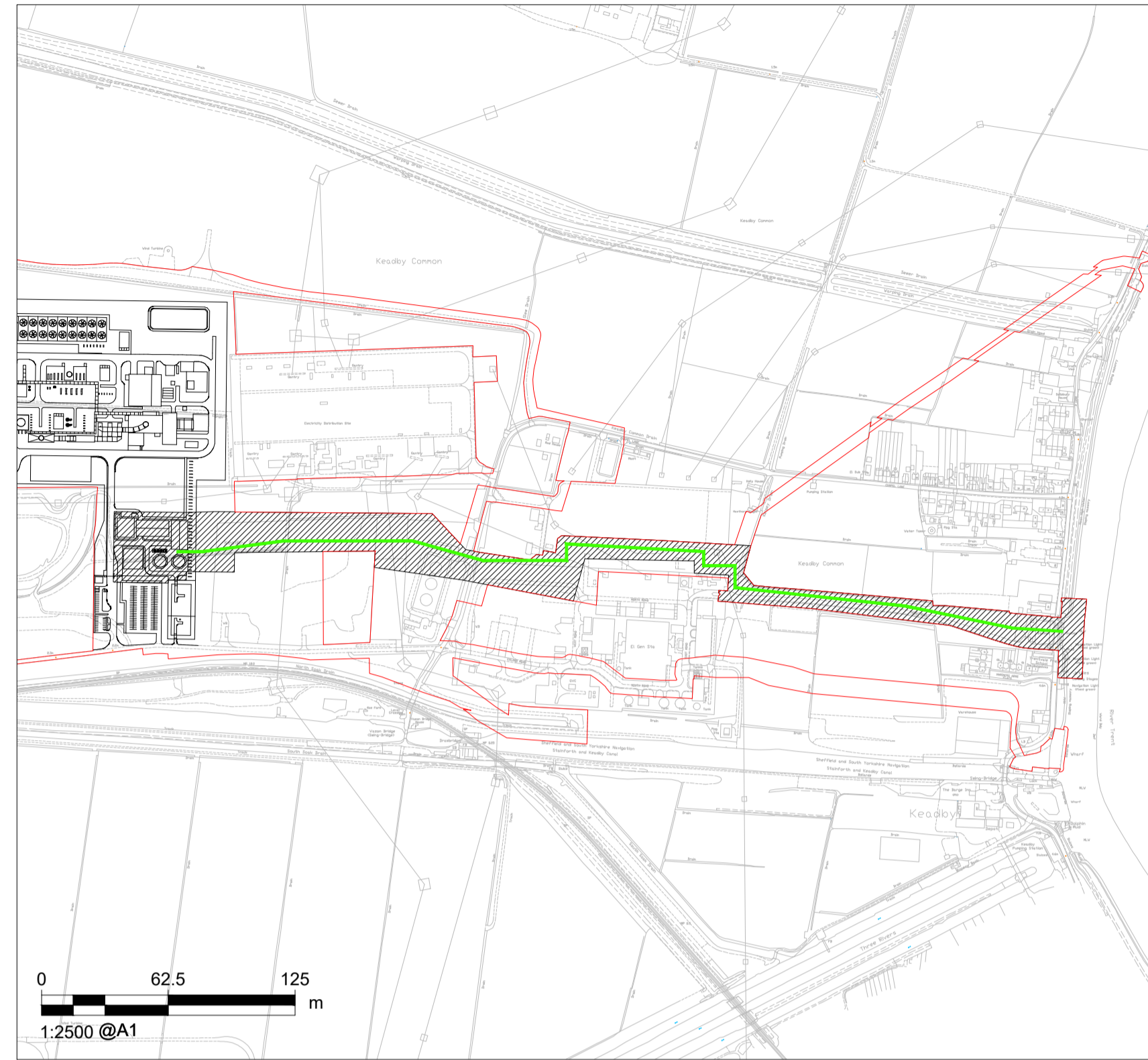
**Date: May 2021**

**DOCUMENT HISTORY**

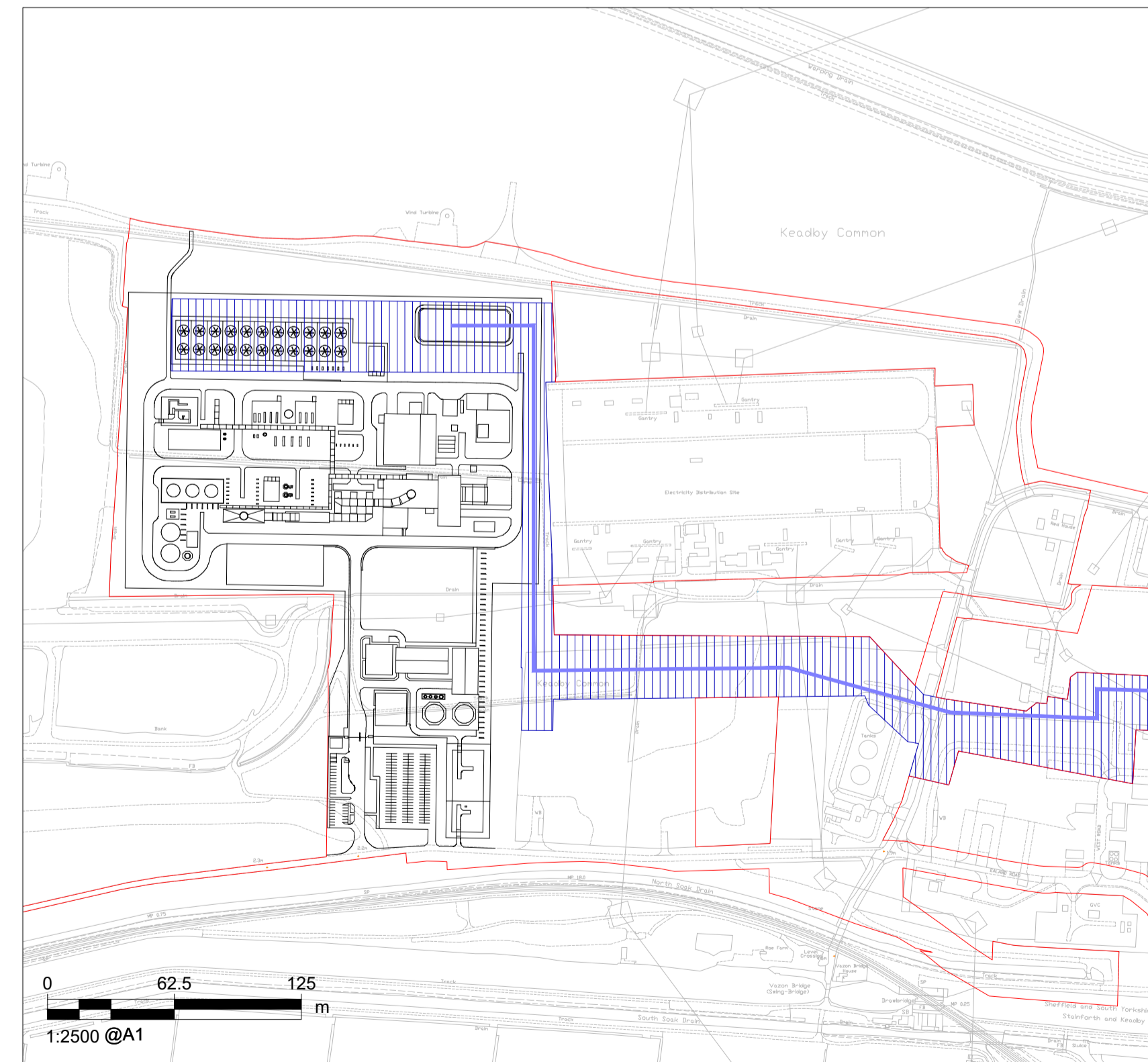
<b>Document Ref</b>	4.9/Indicative Cooling Water and Waste Water Connection Plans
<b>Revision</b>	VP1.0
<b>Document Owner</b>	AECOM



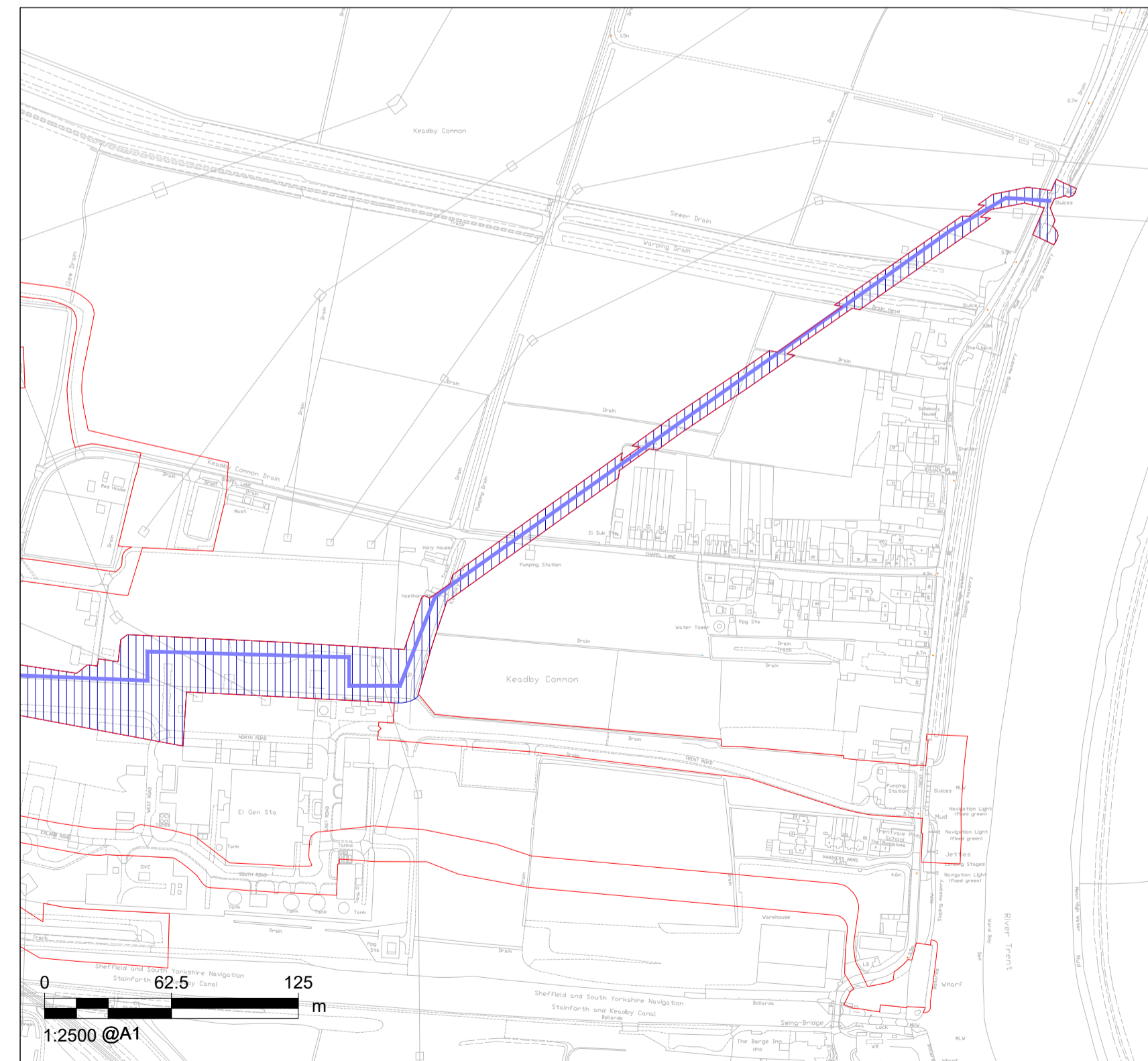
SHEET 2 OF 5 - CANAL SUPPLY CONNECTION LAYOUT VIEW



SHEET 3 OF 5 - RIVER SUPPLY CONNECTION LAYOUT VIEW



SHEET 4 OF 5 - DISCHARGE CONNECTION LAYOUT VIEW



SHEET 5 OF 5 - DISCHARGE CONNECTION LAYOUT VIEW

**PROJECT**

The Keadby 3 (Carbon Capture Equipped Gas Fired Generating Station) Order



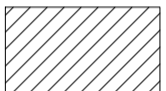
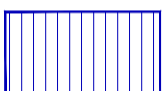



**APPLICANT**

Keadby Generation Limited

**CONSULTANT**

AECOM LIMITED  
GROUND FLOOR  
2 CITY WALK  
LEEDS, LS11 9AR  
T:+44-(0)113-301-8400  
WWW.AECOM.COM

**LEGEND**

-  THE ORDER LIMITS
- Works Plan:
  -  WORK NO. 4A CANAL WATER SUPPLY CONNECTION WORKS
  -  WORK NO. 4B RIVER WATER SUPPLY CONNECTION WORKS
  -  WORK NO. 5 COOLING WATER DISCHARGE PIPELINE
-  INDICATIVE CANAL WATER SUPPLY PIPELINE CONNECTION ROUTING
-  INDICATIVE RIVER WATER SUPPLY PIPELINE CONNECTION ROUTING
-  INDICATIVE COOLING WATER DISCHARGE PIPELINE CONNECTION ROUTING

**NOTES**

Reproduced from Ordnance Survey digital map data © Crown copyright 2021. All rights reserved. Licence number 0100031673.

The Keadby 3 (Carbon Capture Equipped Gas Fired Generating Station) Order  
Regulation 5(2)(o) - Infrastructure Planning (Applications: Prescribed Forms and Procedures) Regulations 2009

**ISSUE PURPOSE**

DCO APPLICATION

**PROJECT NUMBER**

60625943

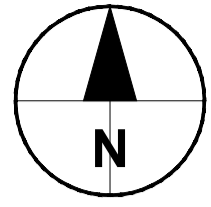
**SHEET TITLE**

Indicative Cooling Water and Waste Water Connection Plans  
Sheet 1 of 5  
Key Plan

**SHEET NUMBER**

Application Document Ref. 4.9  
60625943-PE-DRG-009

This drawing has been prepared for the use of AECOM's client. It may not be used, modified, reproduced or relied upon by third parties, except as agreed by AECOM or as required by law. AECOM accepts no responsibility, and denies any liability, whatsoever, to any party that uses or relies on this drawing without AECOM's express written consent. Do not scale this document. All measurements must be obtained from the stated dimensions.



**PROJECT**

The Keadby 3 (Carbon Capture Equipped Gas Fired Generating Station) Order




**APPLICANT**

Keadby Generation Limited

**CONSULTANT**

AECOM LIMITED  
GROUND FLOOR  
2 CITY WALK  
LEEDS, LS11 9AR  
T:+44-(0)113-301-8400  
WWW.AECOM.COM

**LEGEND**

-  THE ORDER LIMITS
- Works Plan:
  -  WORK NO. 4A CANAL WATER SUPPLY CONNECTION WORKS
  -  INDICATIVE CANAL WATER SUPPLY PIPELINE CONNECTION ROUTING

**NOTES**

Reproduced from Ordnance Survey digital map data © Crown copyright 2021. All rights reserved. Licence number 0100031673.

The Keadby 3 (Carbon Capture Equipped Gas Fired Generating Station) Order  
Regulation 5(2)(o) - Infrastructure Planning (Applications: Prescribed Forms and Procedures) Regulations 2009

**ISSUE PURPOSE**

DCO APPLICATION

**PROJECT NUMBER**

60625943

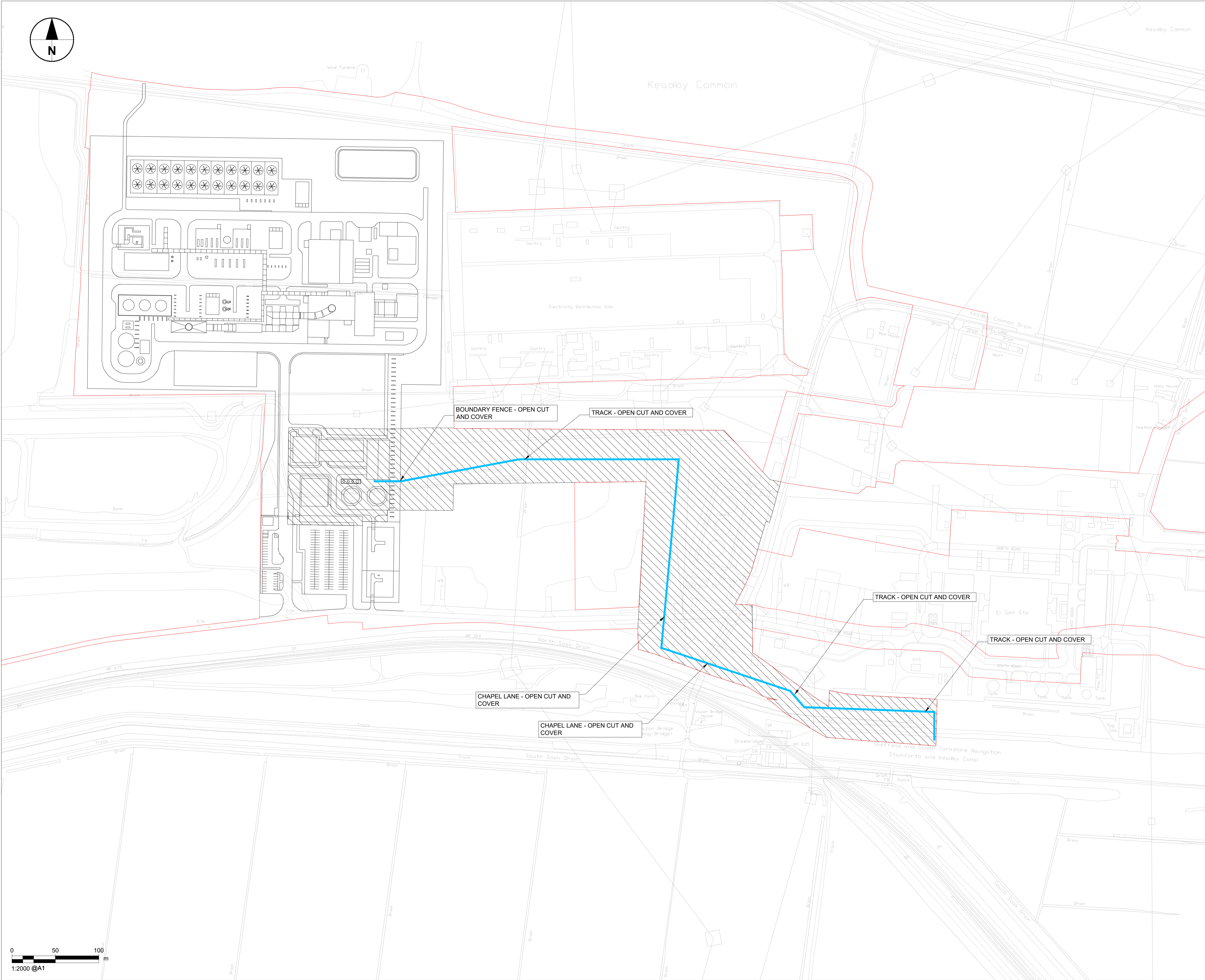
**SHEET TITLE**

Indicative Cooling Water and Waste Water Connection Plans  
Sheet 2 of 5  
Canal Supply Connection Layout View

**SHEET NUMBER**

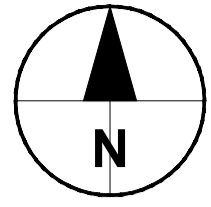
Application Document Ref. 4.9  
60625943-PE-DRG-010

This drawing has been prepared for the use of AECOM's client. It may not be used, modified, reproduced or relied upon by third parties, except as agreed by AECOM or as required by law. AECOM accepts no responsibility, and denies any liability, whatsoever, to any party that uses or relies on this drawing without AECOM's express written consent. Do not scale this document. All measurements must be obtained from the stated dimensions.



Last saved by: DAN RAILEANU(2021-05-18) Last Plotted: 2021-05-27  
Filename: C:\USERS\DAN RAILEANU\AECOM\DIRECTOR\KEADBY3 DCO DELIVERABLES - GENERAL\WORKING\60625943-PE-DRG-010.DWG

AutoCAD Version: 22.05 (LMS TECH)



**PROJECT**

The Keadby 3 (Carbon Capture Equipped Gas Fired Generating Station) Order




**APPLICANT**

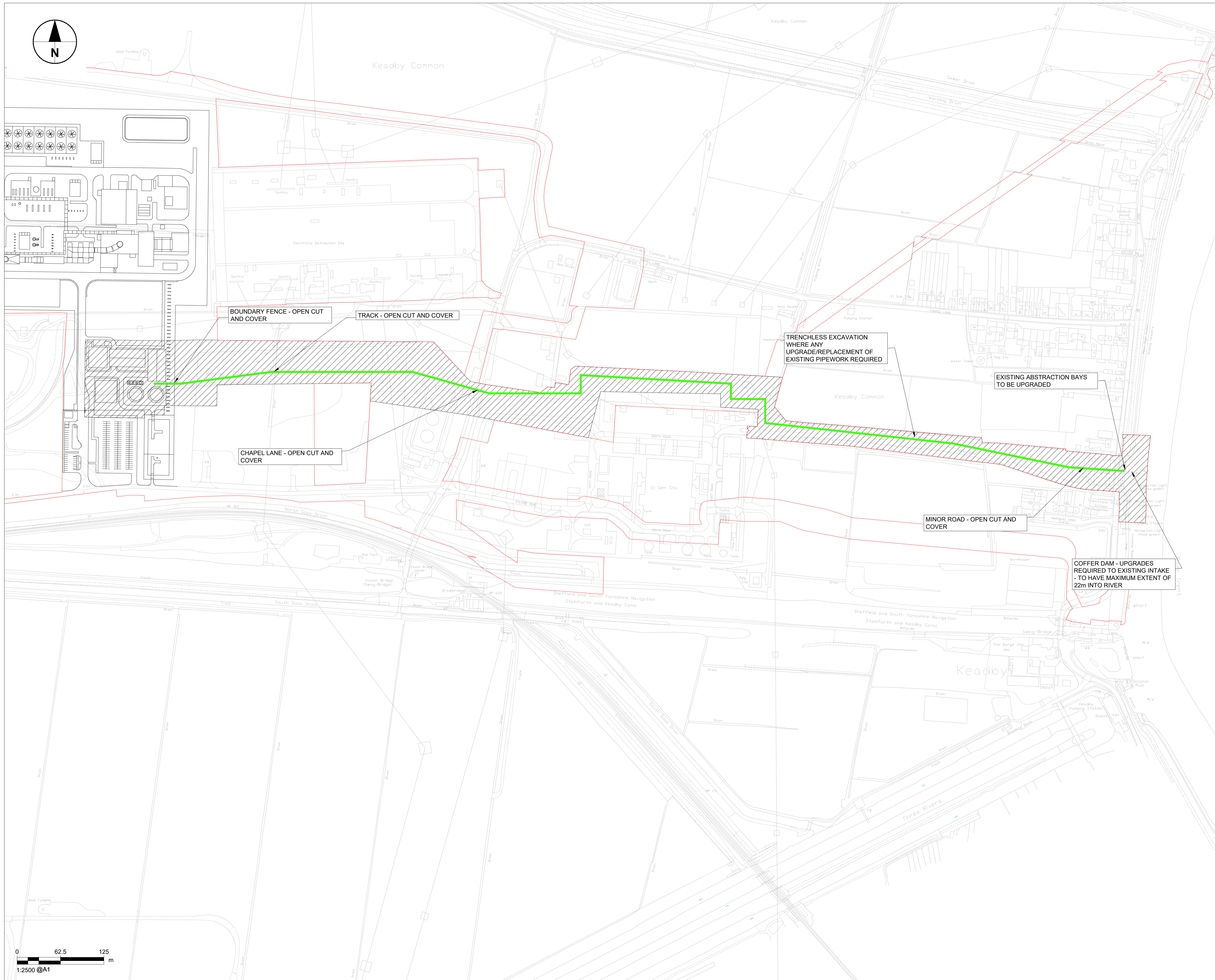
Keadby Generation Limited

**CONSULTANT**

AECOM LIMITED  
GROUND FLOOR  
2 CITY WALK  
LEEDS, LS11 9AR  
T:+44-(0)113-301-8400  
WWW.AECOM.COM

**LEGEND**

-  THE ORDER LIMITS
- Works Plan:
  -  WORK NO. 4B RIVER WATER SUPPLY CONNECTION WORKS
  -  INDICATIVE RIVER WATER SUPPLY PIPELINE CONNECTION ROUTING



**NOTES**

Reproduced from Ordnance Survey digital map data © Crown copyright 2021. All rights reserved. Licence number 0100031673.

The Keadby 3 (Carbon Capture Equipped Gas Fired Generating Station) Order  
Regulation 5(2)(o) - Infrastructure Planning (Applications: Prescribed Forms and Procedures) Regulations 2009

**ISSUE PURPOSE**

DCO APPLICATION

**PROJECT NUMBER**

60625943

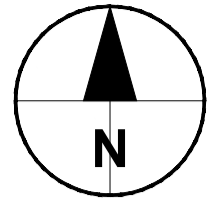
**SHEET TITLE**

Indicative Cooling Water and Waste Water Connection Plans  
Sheet 3 of 5  
River Supply Connection Layout View

**SHEET NUMBER**

Application Document Ref. 4.9  
60625943-PE-DRG-011

This drawing has been prepared for the use of AECOM's client. It may not be used, modified, reproduced or relied upon by third parties, except as agreed by AECOM or as required by law. AECOM accepts no responsibility, and denies any liability, whatsoever, to any party that uses or relies on this drawing without AECOM's express written consent. All measurements must be obtained from the stated dimensions.



**PROJECT**

The Keadby 3 (Carbon Capture Equipped Gas Fired Generating Station) Order

**APPLICANT**

Keadby Generation Limited

**CONSULTANT**

AECOM LIMITED  
GROUND FLOOR  
2 CITY WALK  
LEEDS, LS11 9AR  
T:+44-(0)113-301-8400  
WWW.AECOM.COM

**LEGEND**

THE ORDER LIMITS

Works Plan:

WORK NO. 5 COOLING WATER DISCHARGE PIPELINE

INDICATIVE COOLING WATER DISCHARGE PIPELINE CONNECTION ROUTING

BOUNDARY FENCE - OPEN CUT AND COVER

TRACK - OPEN CUT AND COVER

EXISTING COOLING WATER DISCHARGE PIPEWORK TO BE REUSED FROM THIS POINT TO THE RIVER, WITH TRENCHLESS EXCAVATION WHERE ANY UPGRADE/REPLACEMENT OF EXISTING PIPEWORK REQUIRED

BOUNDARY FENCE - OPEN CUT AND COVER

CHAPEL LANE - OPEN CUT AND COVER

**NOTES**

Reproduced from Ordnance Survey digital map data © Crown copyright 2021. All rights reserved. Licence number 0100031673.

The Keadby 3 (Carbon Capture Equipped Gas Fired Generating Station) Order  
Regulation 5(2)(o) - Infrastructure Planning (Applications: Prescribed Forms and Procedures) Regulations 2009

**ISSUE PURPOSE**

DCO APPLICATION

**PROJECT NUMBER**

60625943

**SHEET TITLE**

Indicative Cooling Water and Waste Water Connection Plans  
Sheet 4 of 5  
Discharge Connection Layout View

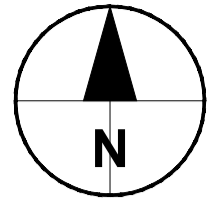
**SHEET NUMBER**

Application Document Ref. 4.9  
60625943-PE-DRG-012-1

Last saved by: DAN RAILEANU(2021-05-18) Last Plotted: 2021-05-27  
Filename: C:\USERS\DAN RAILEANU\AECOM\DIRECTOR\KEADBY 3 DCO DELIVERABLES - GENERAL\WORKING\60625943-PE-DRG-012-1.DWG

0 62.5 125  
1:2500 @A1

This drawing has been prepared for the use of AECOM's client. It may not be used, modified, reproduced or relied upon by third parties, except as agreed by AECOM or as required by law. AECOM accepts no responsibility, and denies any liability, whatsoever, to any party that uses or relies on this drawing without AECOM's express written consent. Do not scale this document. All measurements must be obtained from the stated dimensions.



**PROJECT**

The Keadby 3 (Carbon Capture Equipped Gas Fired Generating Station) Order


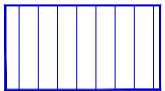

**APPLICANT**

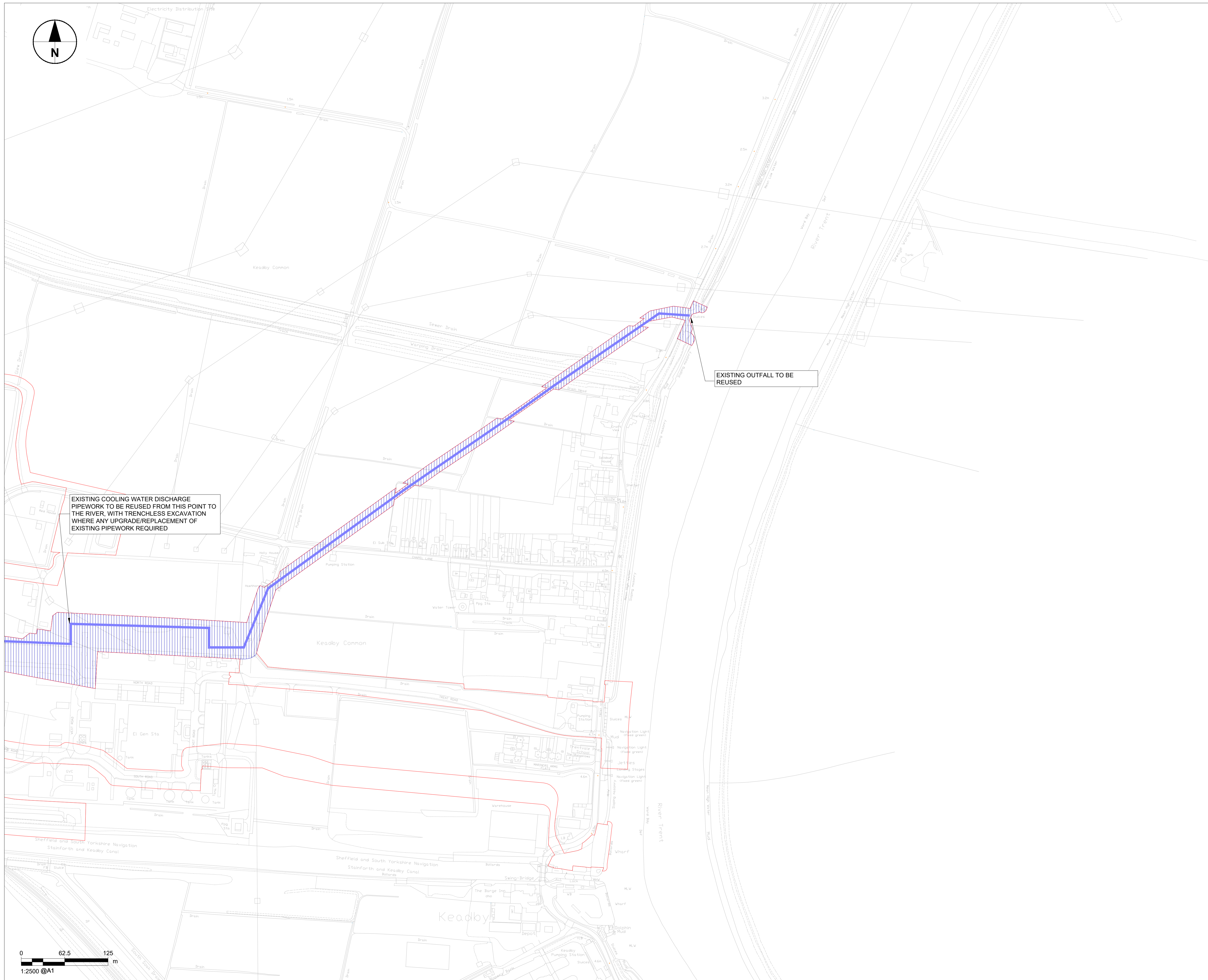
Keadby Generation Limited

**CONSULTANT**

AECOM LIMITED  
GROUND FLOOR  
2 CITY WALK  
LEEDS, LS11 9AR  
T:+44-(0)113-301-8400  
WWW.AECOM.COM

**LEGEND**

-  THE ORDER LIMITS
- Works Plan:
  -  WORK NO. 5 COOLING WATER DISCHARGE PIPELINE
  -  INDICATIVE COOLING WATER DISCHARGE PIPELINE CONNECTION ROUTING



EXISTING COOLING WATER DISCHARGE PIPEWORK TO BE REUSED FROM THIS POINT TO THE RIVER, WITH TRENCHLESS EXCAVATION WHERE ANY UPGRADE/REPLACEMENT OF EXISTING PIPEWORK REQUIRED

EXISTING OUTFALL TO BE REUSED

**NOTES**

Reproduced from Ordnance Survey digital map data © Crown copyright 2021. All rights reserved. Licence number 0100031673.

The Keadby 3 (Carbon Capture Equipped Gas Fired Generating Station) Order  
Regulation 5(2)(o) - Infrastructure Planning (Applications: Prescribed Forms and Procedures) Regulations 2009

**ISSUE PURPOSE**

DCO APPLICATION

**PROJECT NUMBER**

60625943

**SHEET TITLE**

Indicative Cooling Water and Waste Water Connection Plans  
Sheet 5 of 5  
Discharge Connection Layout View

**SHEET NUMBER**

Application Document Ref. 4.9  
60625943-PE-DRG-012-2